



# MONTHLY MEMBERSHIP PROGRESS REPORT

District 325B1

Results as of: 01/31/2019

GMT: KHAGENDRA SITLAULA

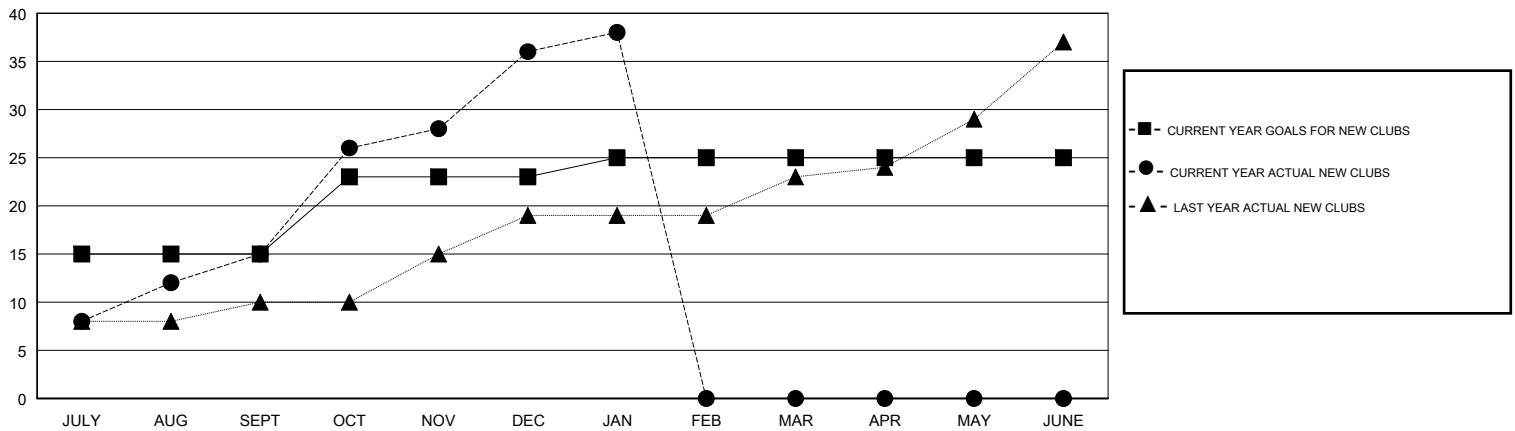
LOCATION NEPAL

GMT CA

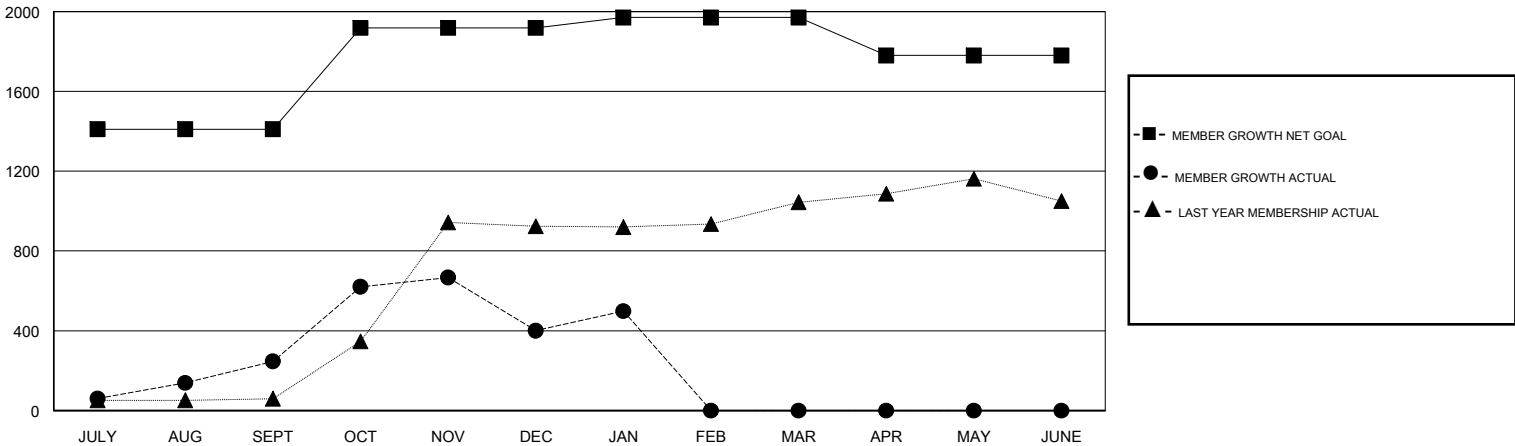
Clubs			
RESULTS FOR 2018-2019			
QUARTER	NEW CLUB GOAL	NEW CLUBS	DROPPED CLUBS
JULY/AUG/SEPT	15	15	0
OCT/NOV/DEC	8	21	11
JAN/FEB/MAR	2	2	0
APR/MAY/JUNE	0	0	0

Members			
RESULTS FOR 2018-2019			
QUARTER	MEMBER GROWTH NET GOAL	MEMBER GROWTH ACTUAL	DROPPED MEMBERS ACTUAL (including transfers)
JULY/AUG/SEPT	1,410	710	449
OCT/NOV/DEC	508	822	662
JAN/FEB/MAR	52	228	97
APR/MAY/JUNE	-190	0	0

GOALS AND ACTUAL NEW CLUBS CUMULATIVE



GOALS AND ACTUAL MEMBERS CUMULATIVE



DROPPED CLUBS: 11

213 CLUBS OF 375 ADDED 1 OR MORE NEW MEMBERS

GENDER DISTRIBUTION

MALE 8,415 (75.50%)  
 FEMALE 2,730 (24.50%)  
 Women Percentage Fiscal Year Goal: 20%

DROPPED MEMBERS

[CLICK HERE FOR CUMULATIVE MEMBERSHIP DATA](#)

DECEASED	2
CLUB CANCELLED	202
OTHER	1,004
<b>TOTAL</b>	<b>1,208</b>

TOTAL FAMILY UNIT MEMBERS	6,100
FAMILY MEMBERS PAYING HALF DUES	3,893